



9 Royal Oak Gardens
Alnwick





9 Royal Oak Gardens, Alnwick, Northumberland, NE66 2DA

Guide Price £395,000

**SPACIOUS FOUR BEDROOM, DETACHED BUNGALOW ON A BEAUTIFUL GARDEN SITE OF 0.2 ACRES -
VERSATILE ACCOMODATION FOR FAMILIES, LONG DRIVEWAY AND DETACHED DOUBLE GARAGE**

A well presented and spacious, four bedroom detached bungalow, enjoying a lovely position to the head of a cul de sac in Royal Oak Gardens, with beautiful landscaped gardens, and a long driveway leading to a double detached garage. The extended detached bungalow is positioned in a hidden gem of a garden, with mature planting, terrace seating areas and well stocked borders. The property has been extended, and allows for great versatility with the bedrooms and living space, ideal for families also. In more recent years, the bungalow has been further improved with new internal doors and front door, a solid roof added to the central bedroom/garden room, new light oak laminate flooring added, and a contemporary ensuite bathroom/WC fitted in the last 5 years.

Entrance Hallway | Sitting room with patio doors leading to the Conservatory | Dining room | Lovely Conservatory opening to the garden | Fitted Kitchen with excellent storage | Master bedroom with a range of fitted wardrobes and a separate study area/dressing room | Ensuite bathroom with double ended bath and separate shower | Bedroom two - a large bedroom or garden room, with glass roof lights and doors open to the garden | Bedroom three - double bedroom | Bedroom four/study | Family bathroom/WC. Externally, the gardens are a major feature of the property - with lawned areas, patio seating areas, arbours with climbing plants, a new storage shed and greenhouse, soft fruit beds including raspberries, strawberries, redcurrant, blackcurrant, blueberries, blackberries & rhubarb.

Fruit trees include cherry, plum, 3 variety of apples, apricot and pear.

Services: Mains Electric, Gas, Water & Drainage | Gas Central Heating | Tenure: Freehold | Council Tax: Band E | EPC: C



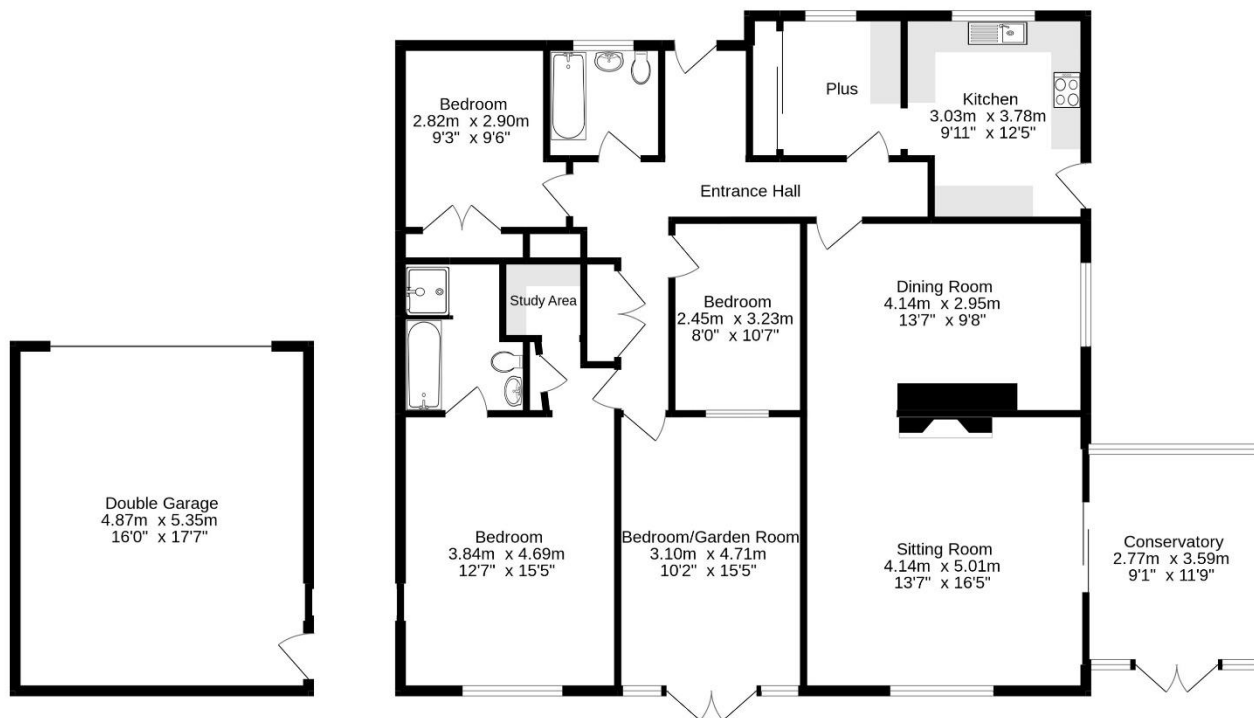








Ground Floor



Whilst every attempt has been made to ensure the accuracy of the floorplan contained here, measurements of doors, windows, rooms and any other items are approximate and no responsibility is taken for any error, omission or mis-statement. This plan is for illustrative purposes only and should be used as such by any prospective purchaser. The services, systems and appliances shown have not been tested and no guarantee as to their operability or efficiency can be given.
Made with Metropix ©2022